

Absorbant Glass Mat (AGM) technology for superior performance. Valve regulated, spill proof construction allows safe operation in any position. Approved for transport by air. D.O.T., I.A.T.A., F.A.A. and C.A.B. certified. U.L. recognized under file number MH 20567.

Maintenance-Free

Specification

Nominal Voltage	12 volts		
Nominal Capacity	77° F (25° C)		
20-hr. (5.50A)	110.0 Ah		
10-hr. (10.23A)	102.3 Ah		
5-hr. (18.70A)	93.5 Ah		
1-hr. (66.00A)	66.0 Ah		
Approximate Weight	65.7 lbs (29.8 kgs)		
Internal Resistance (approx.)	5mΩ		
Shelf Life (% of normal capacity at 77° F (25° C))			
3 Months	6 Months	12 Months	
91%	82%	64%	
Temperature Dependency of Capacity	(20 hour rate)		
104° F (40° C)	77° F (25° C)	32° F (0° C)	5° F (-15° C)
102%	100%	85%	65%
AGM Operational Temperature			
Charge	32° F to 104° F (0° C to 40° C)		
Discharge	5° F to 113° F (-15° C to 45° C)		
AGM Storage Temperature	5° F to 104° F (-15° C to 40° C)		



Charge Method (Constant Voltage)

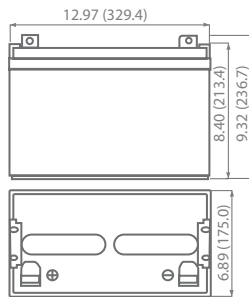
Cycle Use (Repeating Use)

Initial Current	33 A or smaller
Control Voltage	14.6 - 14.8 V

Float Use

Control Voltage	13.6 - 13.8 V
-----------------	---------------

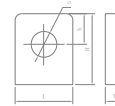
Physical Dimensions: in (mm)



L: 12.97in (329.4 mm)
W: 6.89in (175.0 mm)
H: 8.40in (213.4 mm)
TH: 9.32in (236.7 mm)

Tolerances are +/- 0.04 in. (+/- 1mm) and +/- 0.08 in. (+/- 2mm) for height dimensions. All data subject to change without notice.

Terminals



L Series (L Type Terminal)

Dimension or Type	L	W	H	h	∅
L3	25.5	7.0	22.0	10.5	8.5

Constant Current Discharge Characteristics Unit:A (25°C, 77°F)

F.V/Time	5MIN	10MIN	15MIN	30MIN	1HR	2HR	3HR	4HR	5HR	8HR	10HR	20HR
9.60V	361.1	269.3	189.5	114.7	59.9	34.9	25.6	20.0	16.5	11.6	10.5	5.7
10.20V	325.2	245.4	169.6	108.7	56.3	33.3	24.9	19.5	16.2	11.4	10.2	5.5
10.50V	313.2	233.4	159.6	105.7	54.9	32.5	24.3	19.2	16.0	11.3	10.0	5.5
10.80V	301.2	221.4	149.6	102.7	52.9	31.7	23.7	18.9	15.6	11.0	10.0	5.4
11.10V	289.3	209.5	139.7	99.8	50.9	30.9	22.9	18.3	15.2	10.7	9.5	5.1

Constant Power Discharge Characteristics Unit:W (25°C, 77°F)

F.V/Time	5MIN	10MIN	15MIN	30MIN	1HR	2HR	3HR	4HR	5HR	8HR	10HR	20HR
9.60V	3919.2	2959.6	2013.0	1217.9	693.3	404.0	297.3	231.4	190.5	134.7	121.7	65.5
10.20V	3610.0	2724.2	1882.3	1207.0	651.4	386.0	289.3	225.4	149.7	131.7	118.7	63.8
10.50V	3552.1	2647.4	1809.5	1199.0	630.4	377.1	282.3	221.4	184.5	130.7	116.7	63.0
10.80V	3506.2	2577.5	1741.6	1196.0	613.5	369.1	276.3	217.5	181.5	127.7	115.7	62.7
11.10V	3442.4	2492.8	1661.8	1187.0	605.5	368.1	273.3	216.5	180.5	126.7	112.7	60.8



ISO 9001:2008

www.upgi.com

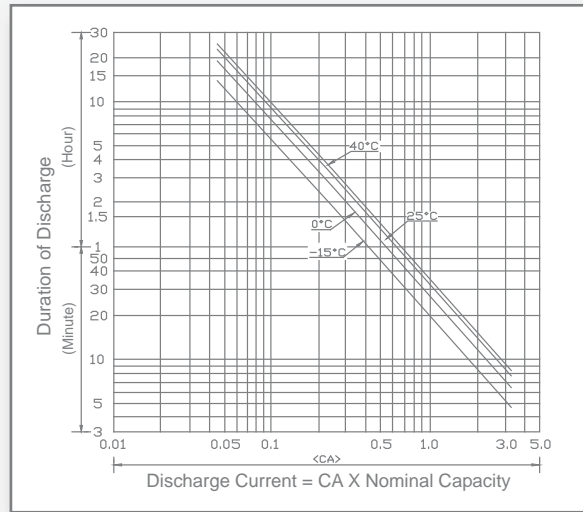
All specifications subject to change without notice.

488 S. Royal Lane | Coppell, Texas 75019 | P 469.892.1122 | T 866.892.1122 | F 469.892.1123 | sales@upgi.com

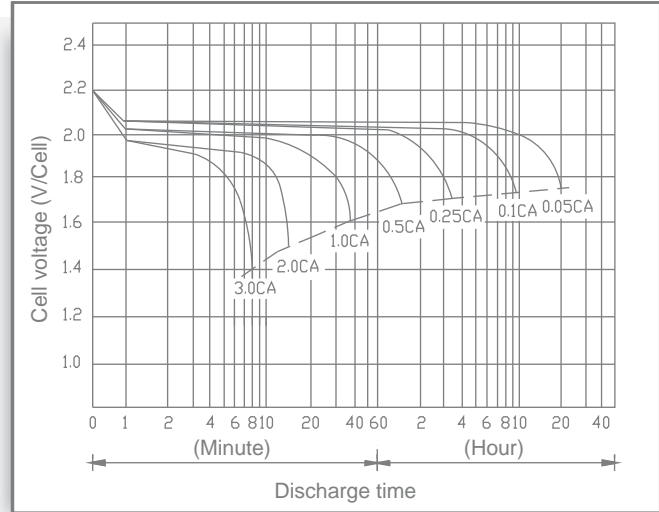
UB121100

Maintenance-Free

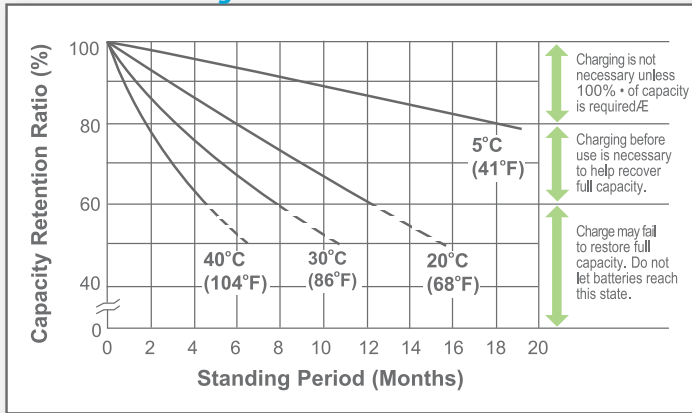
Discharge Time vs. Discharge Current



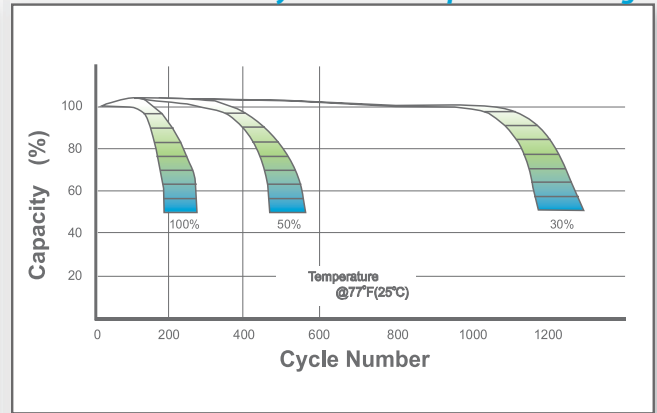
Discharge Characteristics



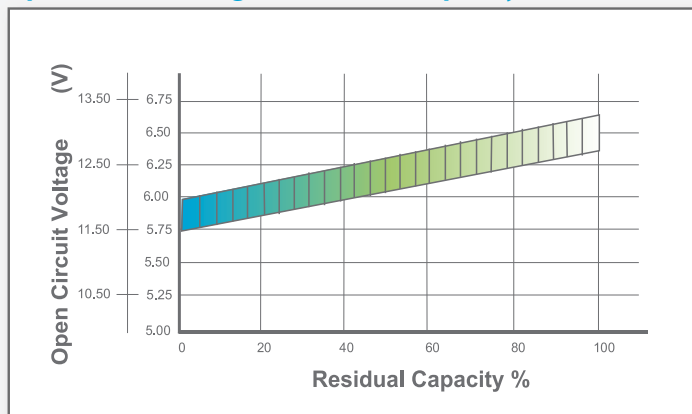
Shelf Life & Storage



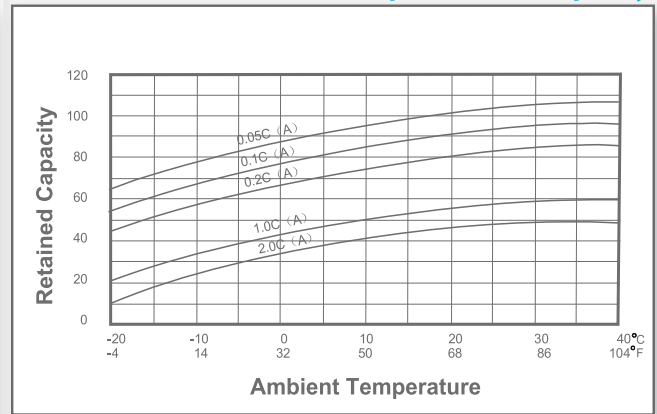
Cycle Life vs Depth of Discharge



Open Circuit Voltage vs Residual Capacity



Effect of Temperature on Capacity



Charge Current & Final Discharge Voltage

Application	Charge Voltage(V/Cell)			Max.Charge Current	Final Discharge Voltage V/Cell	Discharge Current(A)	1.75	1.70	1.60	1.30
	Temperature	Set Point	Allowable Range							
Cycle Use	25°C(77°F)	2.45	2.43~2.47	0.30C	1.75	0.2C>(A)	1.70	1.70	1.60	1.30
Standby	25°C(77°F)	2.285	2.27~2.30							



ISO 9001 :2008

Let UPG Power Your Life.

www.upgi.com